

Installing DPTI Customisation for 12d Model

Installing Customisation files

The customisation content is packaged as a zip file (ie. 12d_Model_DPTI_Cust_V12.zip).

a. Save the zip file to your computer.

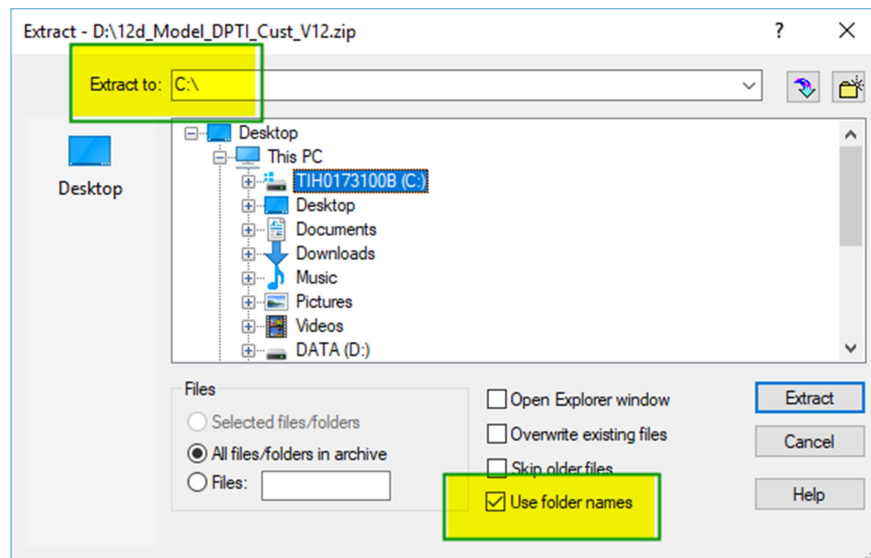
b. Extract the files as shown below.

Ensure that the files are extracted to C:\ and that 'Use folder names' is ticked on

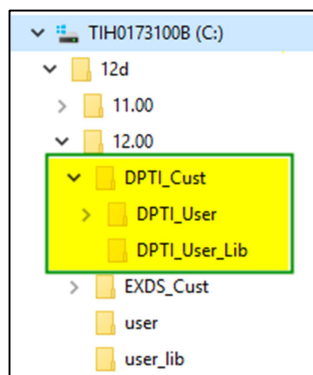
The path for the customisation files is built into the zip file.

To correctly install the customisation files, you must:

- unzip to C:\ and
- ensure that 'Use Folder names' is ticked on.



After extracting the files, there will be new folders on C:\ as shown below



Configuring 12d Model

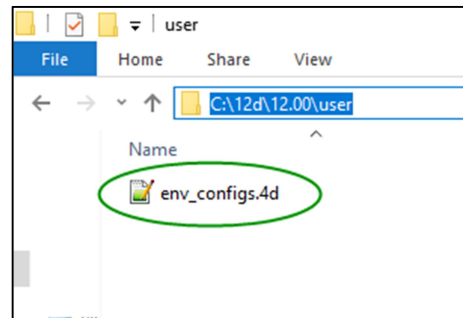
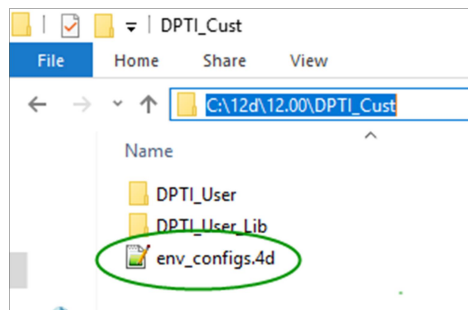
Using the DPTI Customisation requires the use of an Environment Configuration.

If you do not have an Environment Configuration

Copy the 'env_configs.4d file from
C:\12d\12.00\DPTI_Cust

to

C:\12d\12.00\user



If your Company is already using Environment Configurations

The existing env_configs.4d file will need to be edited to add the necessary folder paths for the DPTI Customisation.

This is most easily done by copying the configuration lines from the file provided, into the current company setup file.