

# Installing DIT Customisation for 12d Model Software

## Installing Customisation files

The customisation content is packaged as a zip file (ie. 12d\_Model\_DIT\_Cust\_V15.zip).

a. Save the zip file to your computer.

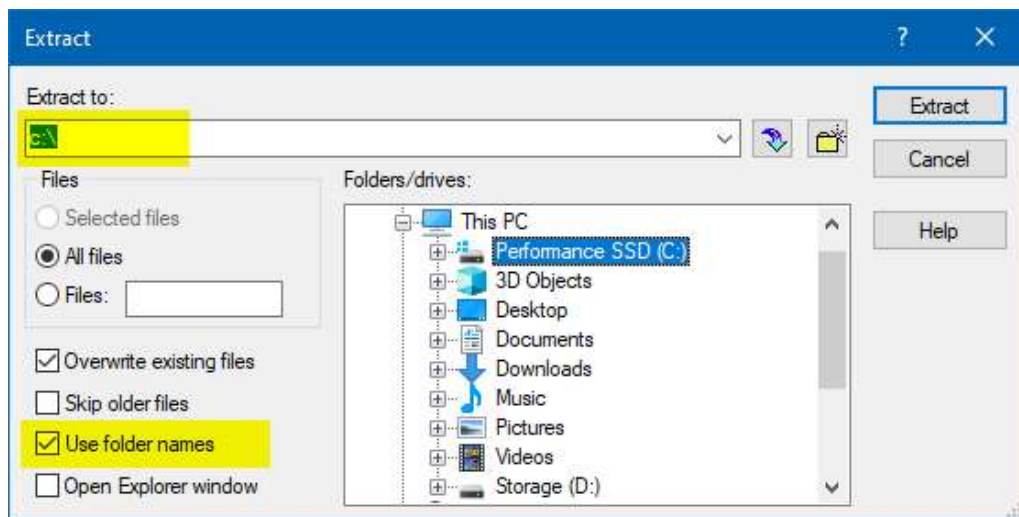
b. Extract the files as shown below.

Ensure that the files are extracted to C:\ and that 'Use folder names' is ticked on

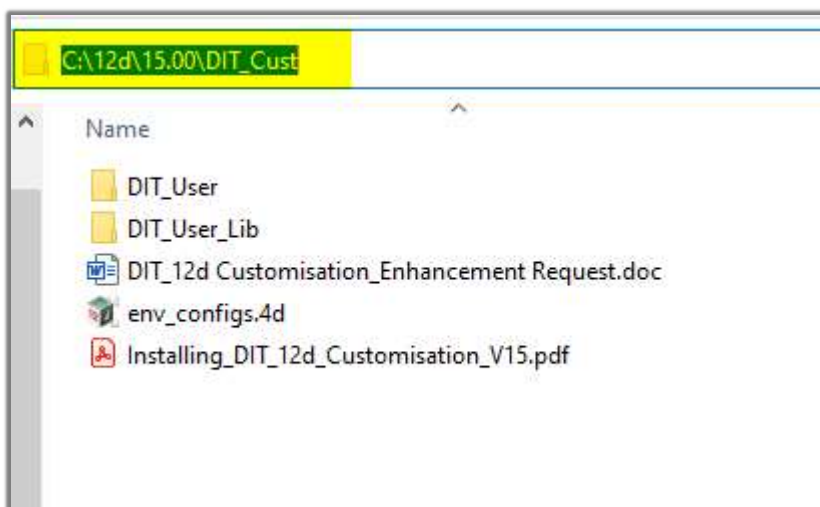
The path for the customisation files is built into the zip file.

To correctly install the customisation files, you must:

- unzip to C:\ and
- ensure that 'Use Folder names' is ticked on.



After extracting the data files there will be new folders created on C:\ as shown below



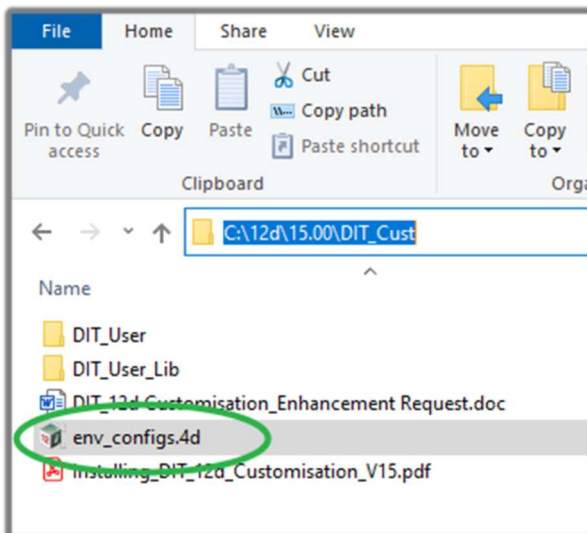
## Configuring 12d Model

Using the DIT Customisation requires the use of an Environment Configuration file.

### If you do not have an Environment Configuration file?

Copy the 'env\_configs.4d file from  
C:\12d\15.00\DIT\_Cust

to C:\12d\15.00\user



### If your Company is already using a 12d Environment Configuration file?

The existing "*env\_configs.4d*" file will need to be edited to add the necessary folder paths for the DIT Customisation.

This is most easily done by copying the configuration lines from the file provided, into the current company setup file. Please call 12d Technical Support if you require assistance.